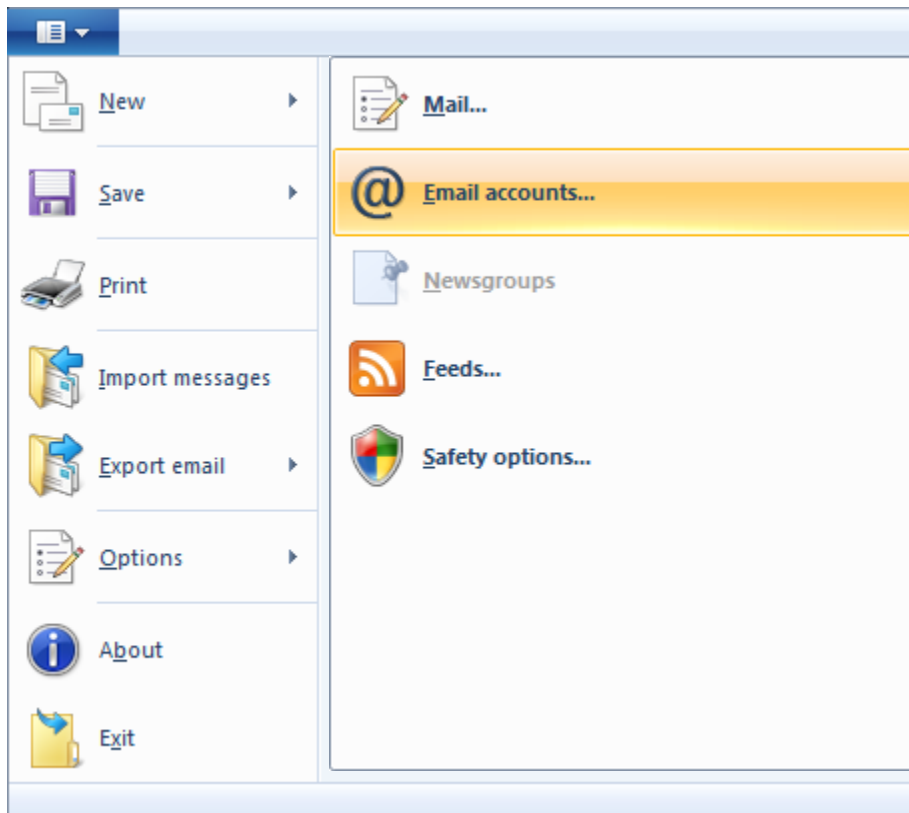


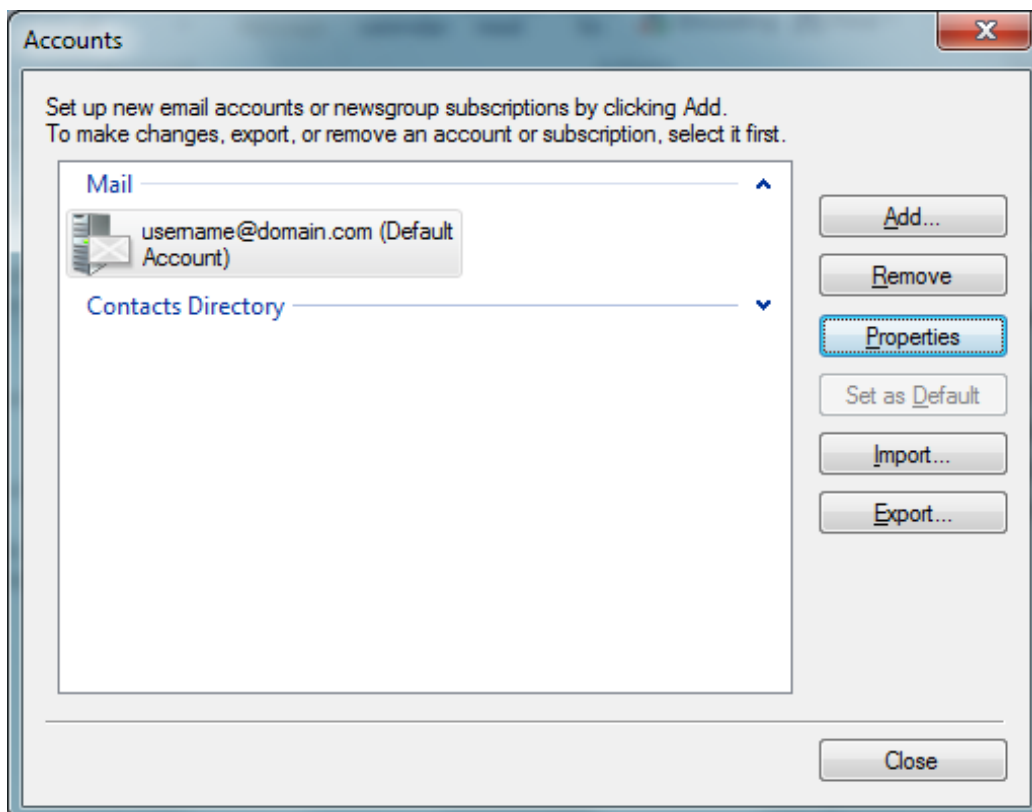
Instructions for setting up your Windows Live Mail

The instructions below are for setting up your Windows Live Mail account hosted by HLI Systems.

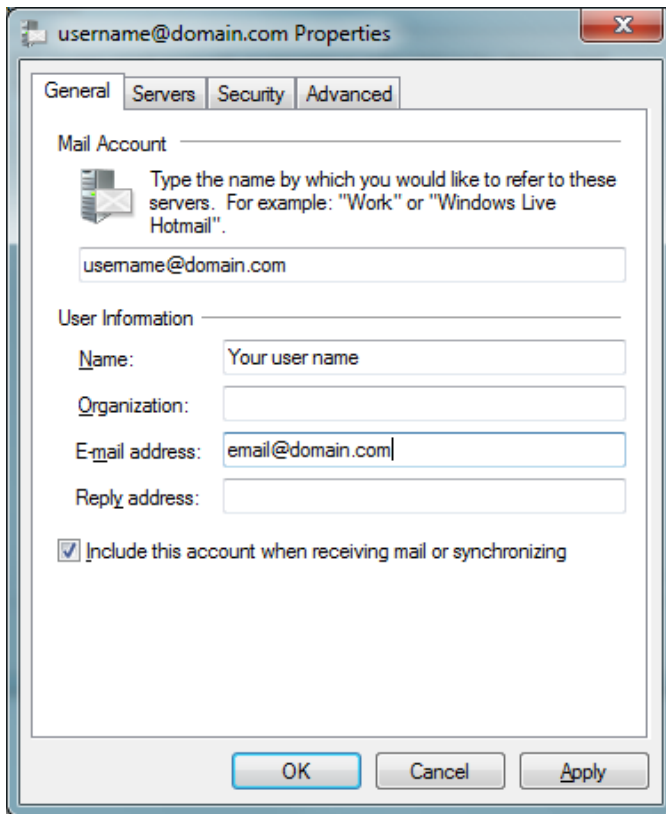
1. Open Windows Live Mail and go to Options and email accounts...



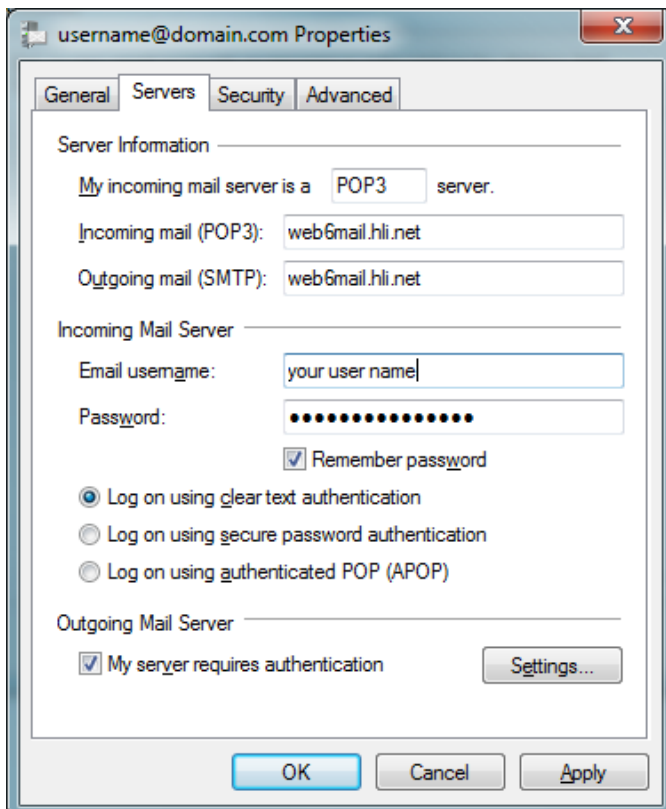
2. The Accounts window will pop up. Select your mail account and click properties.



3. In the User Properties, General Tab enter your name and email address. Make sure there is a check mark in the Include this account when receiving mail or synchronizing box.



4. Next select the Servers tab and enter the info that is listed below and make sure there is a check in My server requires authentication box.



5. Select the Advanced tab and enter the info that is listed below and click Apply. If it errors out when you send and receive change the Outgoing mail (SMTP) port to 589 and if it errors again, change it to 27.

